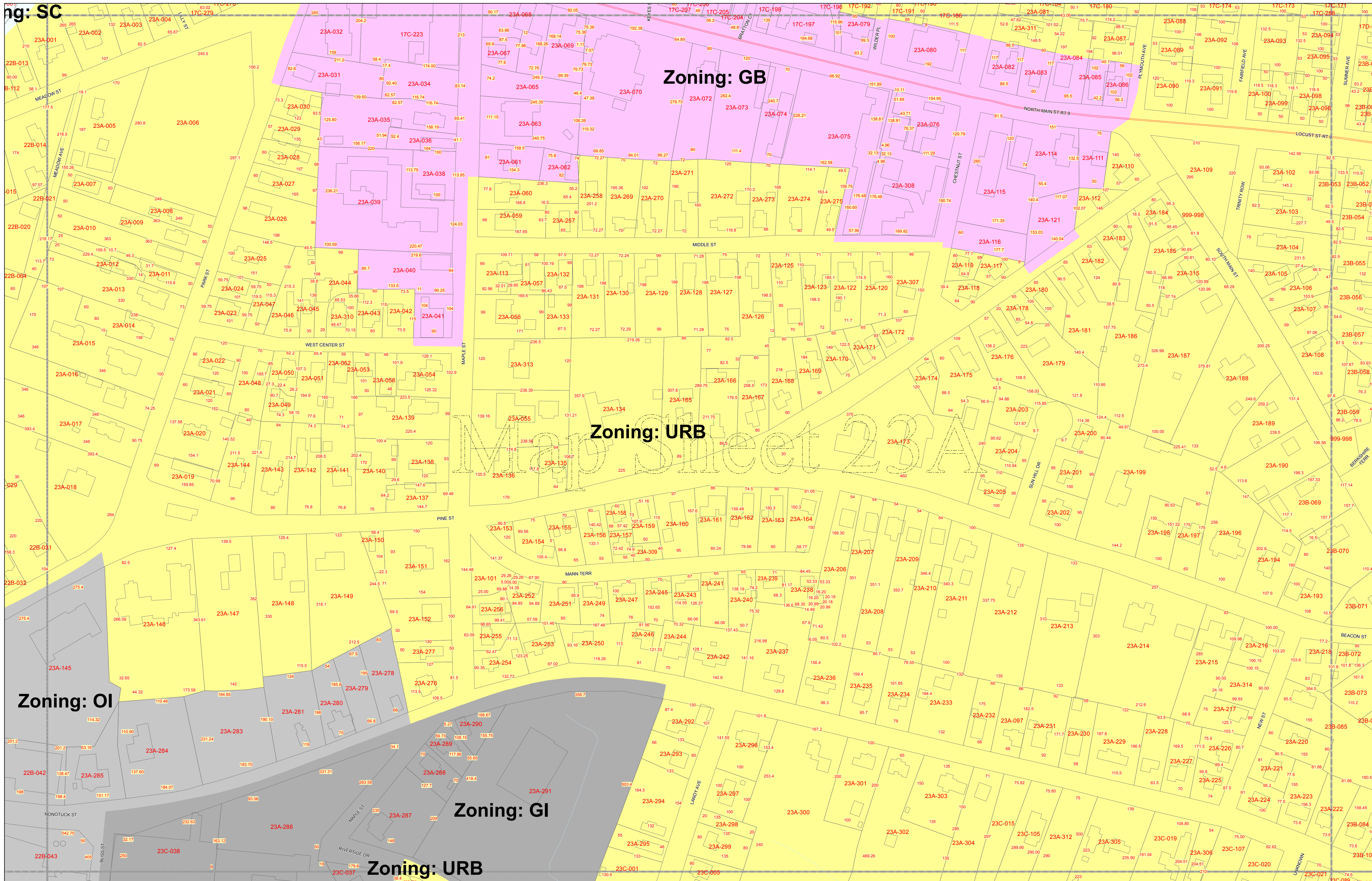


ng: SC



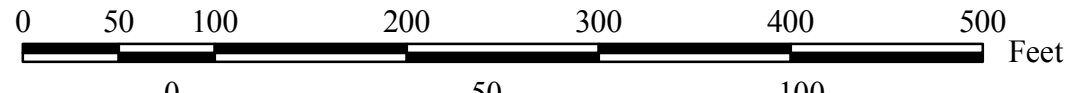
Zoning: OI

Zoning: URB

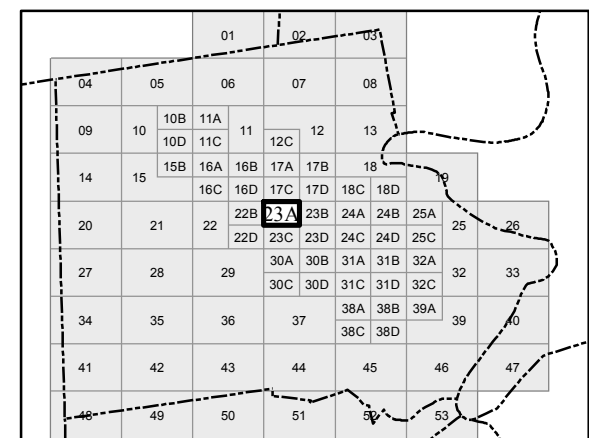
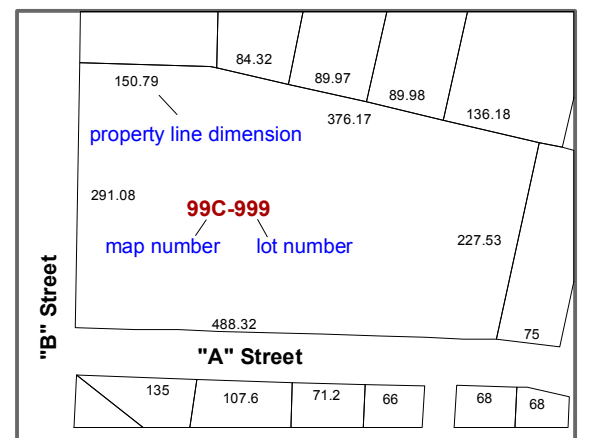
Zoning: GI

Zoning: URB

Northampton Zoning Map



Projection: Massachusetts State Plane (NAD83)
 These maps are not intended for use in conveyances and they contain errors and discrepancies.
 Individuals requiring an authoritative property boundary or other location must retain the services of a professional land surveyor.
 Assessor lines revision date: 01 January 2020
www.NorthamptonMA.gov e-mail: CityGIS@NorthamptonMA.gov



Map Sheet
23A