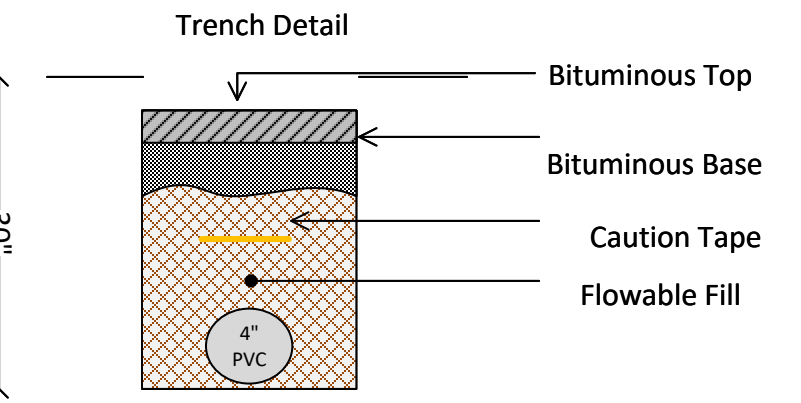
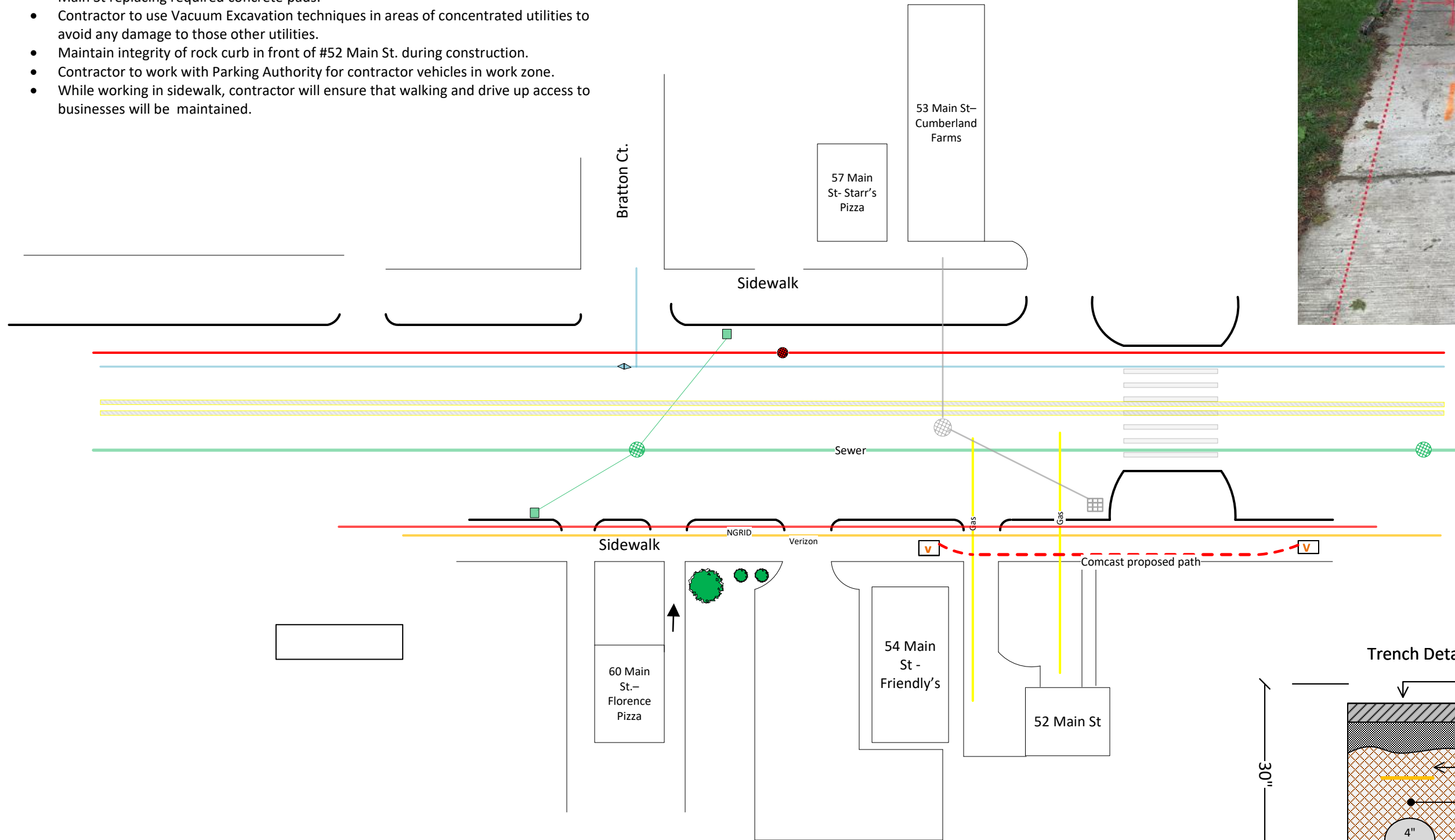



Scope of Work

- Starting in sidewalk near parking lot of #32-#40 Main St. intercept existing cables coming from Wilder Place and set 24"x36" quasite vault flush in sidewalk. Install 3" PVC conduit and install a second 24"x36" quasite vault flush in sidewalk in front of #54 Main St replacing required concrete pads.
- Contractor to use Vacuum Excavation techniques in areas of concentrated utilities to avoid any damage to those other utilities.
- Maintain integrity of rock curb in front of #52 Main St. during construction.
- Contractor to work with Parking Authority for contractor vehicles in work zone.
- While working in sidewalk, contractor will ensure that walking and drive up access to businesses will be maintained.



 COMCAST	
<i>Michael Miller</i>	6/6/23