



**Customer:** School Bridge St  
**Address:** 2 Parsons St  
Northampton, MA 01060

**System size:** 29.60 kW  
**Yr 1 Production:** 31,752 kWh  
**Designer:** Northeast Solar  
**Date:** March 25th, 2021

## Site Assessment





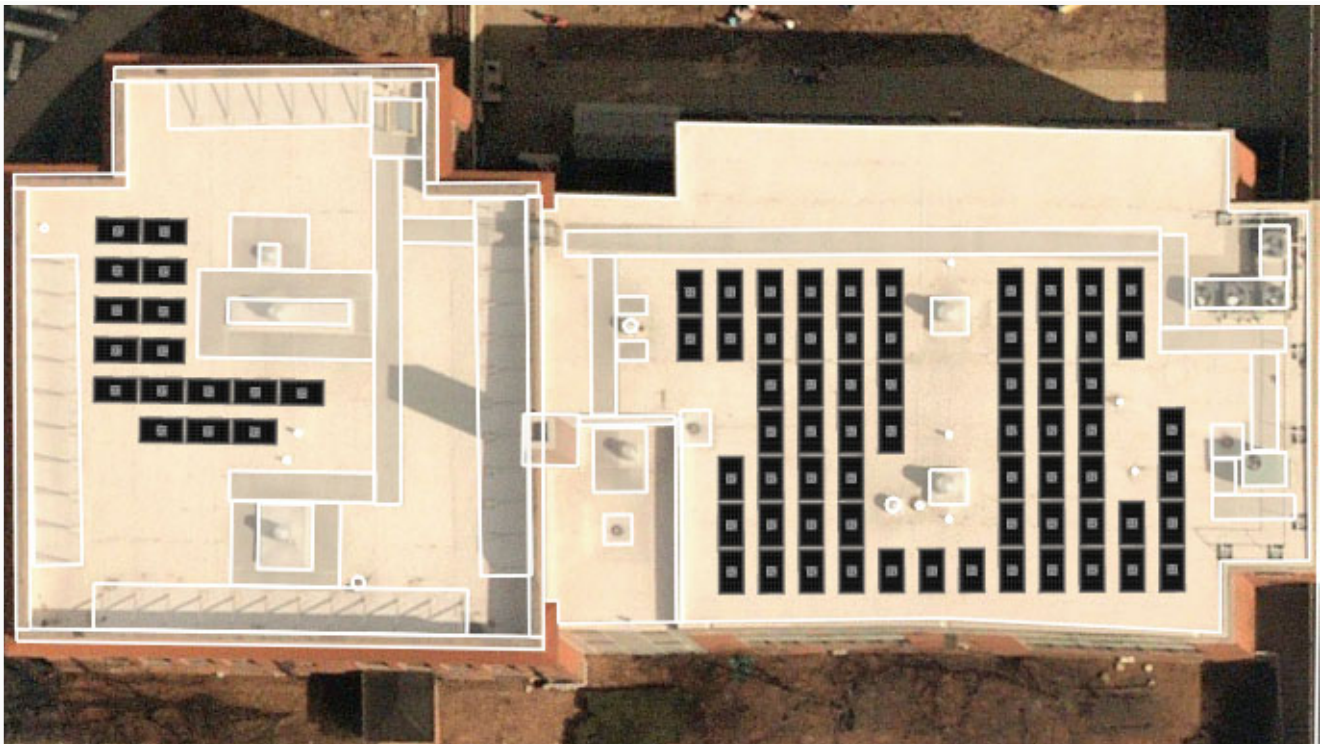
# Site Assessment

**Customer:** School Bridge St  
**Address:** 2 Parsons St  
Northampton, MA 01060



## Component List

Manufacturer	Model	Quantity
LG Electronics Inc.	LG370N1K-A6	80
SolarEdge Technologies Inc.	P370	80
SolarEdge Technologies Inc.	SE9KUS (208V)	1
SolarEdge Technologies Inc.	SE14.4KUS (208V)	1



**Notes:**