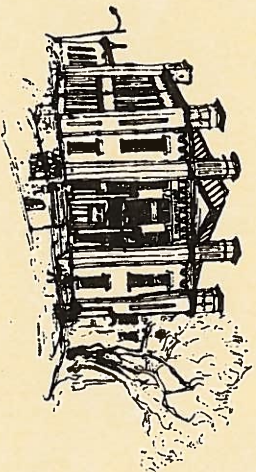


# Proclamation



## CITY OF NORTHAMPTON COMMONWEALTH OF MASSACHUSETTS

### 150th Rededication of Clarke Schools October 1<sup>st</sup>, 2017

**WHEREAS,** Founded in 1867 in Northampton, MA, Clarke became the first school in the country to teach deaf students using the oral method and the first to recognize the importance of successfully mainstreaming deaf students into their neighborhood schools; and

**WHEREAS,** Through its partnership with Smith College, Clarke was also the first to train teachers in auditory/oral education; and

**WHEREAS,** Over the last two decades, universal newborn hearing screening and advanced technology like cochlear implants have made it possible for deaf and hard of hearing children to learn to listen and talk at earlier ages than ever before; and

**WHEREAS,** On September 30<sup>th</sup>, of this year, the Clarke Schools Alumni Council will gather together downtown Northampton to rededicate the commemorative stone that marks the location of the original Clarke School. October 1<sup>st</sup> marks Clarke's 150 year history at the Northampton campus. The dedication and innovation of the students, educators, and health professionals have been an integral part of achieving its mission of providing children who are deaf and hard of hearing with the listening, learning and spoken language skills they need to succeed.

**NOW,**  
**THEREFORE,** I, David J. Narkewicz, Mayor of the City of Northampton, do hereby proclaim October 1<sup>st</sup>, 2017 as the

### 150<sup>th</sup> Rededication of Clarke Schools

throughout Northampton. I encourage all residents to recognize the valuable contributions made by the Clarke Schools in our city, nationally and across the world. We celebrate their important work and look forward to their next century and a half of impressive achievements.

In Witness Whereof, I have set my hand and imprinted the seal of the City of Northampton, this 30<sup>th</sup> day of September, in the year 2017.



---

Mayor David J. Narkewicz