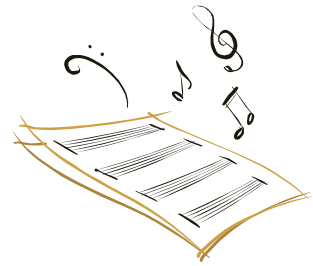




# Florence Community Band



The Florence Community Band was founded on April 18, 2001, with 10 members in attendance at the first rehearsal. It has grown to a membership roster with over 50 musicians, with an average of 35 at rehearsals and performances.

In affiliation with the Northampton Recreation Department, the Florence Community Band's mission is to provide musicians the opportunity to gather regularly to play ensemble music, to perform this music for the community and to have fun doing so. There are no auditions, no dues, and people of all ages and musical experience are welcome. We provide free concerts in various settings, including nursing facilities, retirement communities, community events, parks and parades. We host and organize a yearly event, the Community Band Festival, located at Look Park's Pines Theater, in which several local community bands come together to rehearse and perform as an ensemble. We do not play at political or religious events.

The band rehearses Wednesday evenings from 7-9pm at the Northampton High School Band Room, 380 Elm Street, Northampton, MA. Rehearsals are fairly structured but still relaxed. Music difficulty ranges from medium easy to medium.

For more information visit [www.florencecommunityband.com](http://www.florencecommunityband.com) or call 584-3238.



[www.northamptonma.gov/recreation](http://www.northamptonma.gov/recreation)