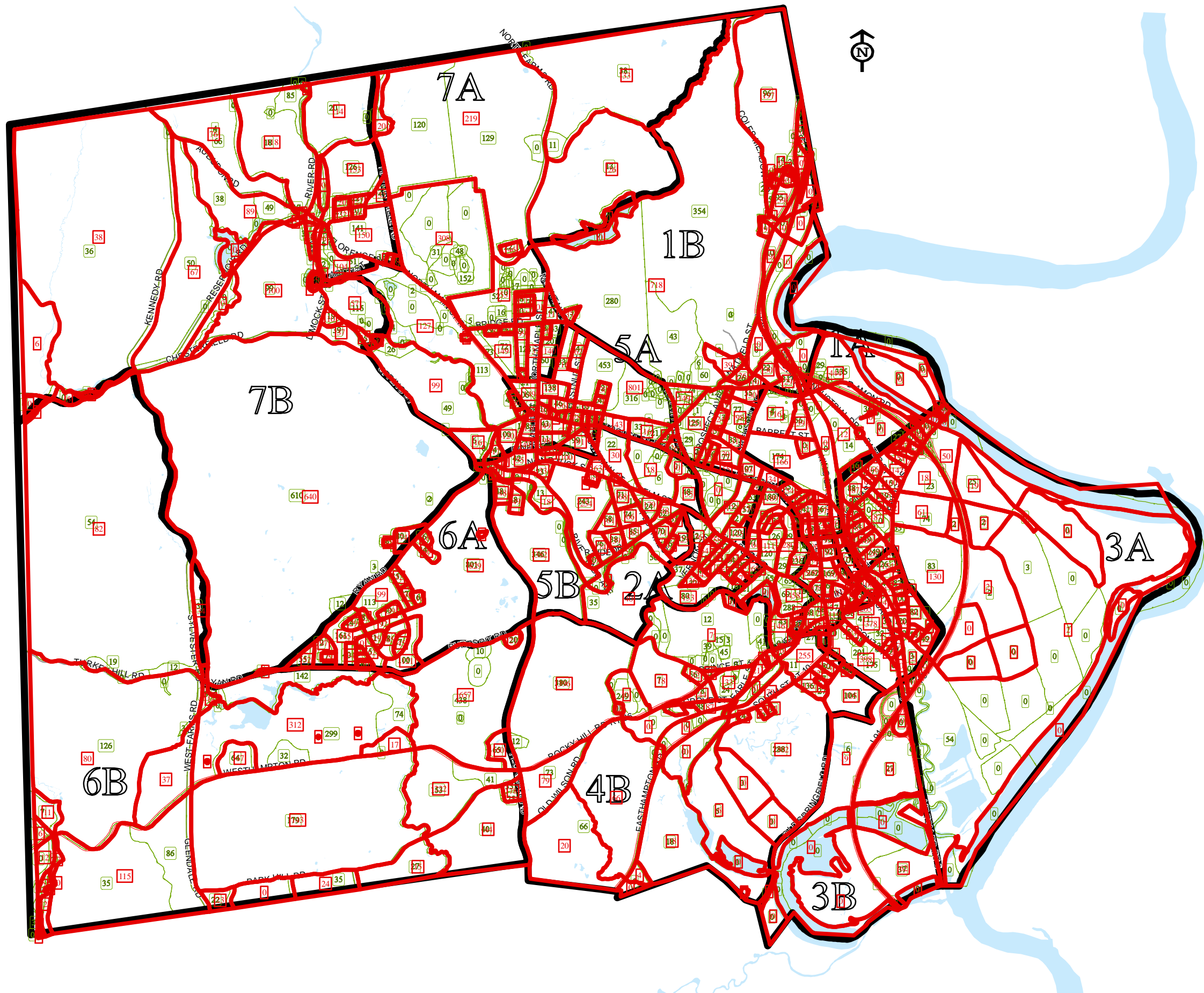


# Northampton Population Change 2000 - 2010



- 1A Current Ward/Precinct
- Census 2010 Blocks
- 999 Census 2010 Population
- Census 2000 Blocks
- 999 Census 2000 Population

The map shows population by census block using data from Census 2000 and census 2010. The current wards and precincts are also shown.

A census block is a geographic unit defined for tabulation purposes. It is not necessarily the same as a "city block". For example, a body of water can be a census block. There were 469 census blocks for Census 2000; there were 745 census blocks for Census 2010.

Northampton's Re-Districting Committee, which is composed of one representative from each of the current wards, will use a set of rules provided by the state to draw new ward and precinct boundaries based on the Census 2010 population. The new boundaries must be approved first by the City Council and then by the State.

The new boundaries will go into effect December 31, 2011.

Data Sources:  
P.L. 94-171 Summary File  
Northampton GIS

